

# Clinical Judgment Exams for PN Students

Retention & Readiness



Clinical Judgment Exams provide pre-written, high-quality assessments for nursing programs nationwide—created by NurseThink®, the leading experts in nursing education, and powered exclusively by ExamSoft. Nursing programs now have access to clinical judgment assessment data necessary to continuously improve student learning outcomes, empower students for NCLEX-PN® success, enable timely feedback, and develop practice readiness.

## Two Ways to Start Using Clinical Judgment Exams

Clinical Judgment Exams offer multiple assessments for each specialty and subject. Each assessment includes results in cohort- and student-level reports to assess clinical judgment at all levels. These separate exam tools include:

### Benchmarked Assessments

Take advantage of pre-written assessments that accurately gauge student learning and competency. Category-based reporting at the program level and student level will measure students' true mastery of concepts against a **national cohort** of nursing students. To help ensure nursing students are on track for practice readiness and NCLEX-PN success, each content area includes three distinct assessment types: Benchmark I, Benchmark II, and Open Check.

### Build-Your-Own Question Bank

Every instructor knows writing professional-level nursing exam questions is difficult and time consuming. That's why each content area of Clinical Judgment Exams pre-written assessments includes content that instructors can use to supplement their own exam questions to help improve assessment and instruction. These questions are securely uploaded and saved in the client's ExamSoft database for use at the instructor's discretion.





## Focus Area



### Fundamentals

Recognizing cues and taking appropriate action.



### Medical-Surgical

Preparing for all aspects of adult health.



### Pharmacology

Assessing clinical judgment concerning pharmacotherapeutics.



### Mental Health

Emphasizing mental health care in all settings.



### Maternal-Child

Focusing on the needs of mothers, the fetus, and children.



### Leadership/Health Promotion

Assessing leadership and management abilities.



### Readiness Exam

Predicting readiness for the NCLEX-PN and professional practice.

The Readiness Exam does not include an additional Build-Your-Own question bank.

## Robust Content for Targeted Remediation

All content from Clinical Judgment Exams is categorized in accordance with NCLEX-PN®, QSEN, the Clinical Judgment Measurement Model (CJMM) so every student performance report highlights specific individual strengths and weaknesses.

## Client-Focused Service by ExamSoft

ExamSoft works with clients to ensure a consistent exam experience that preserves benchmark validity and protects the security of all exam questions. Benchmark Exams are facilitated by ExamSoft on behalf of clients, provisioning client access to administer, proctor, and review results for their own Benchmark Exams.

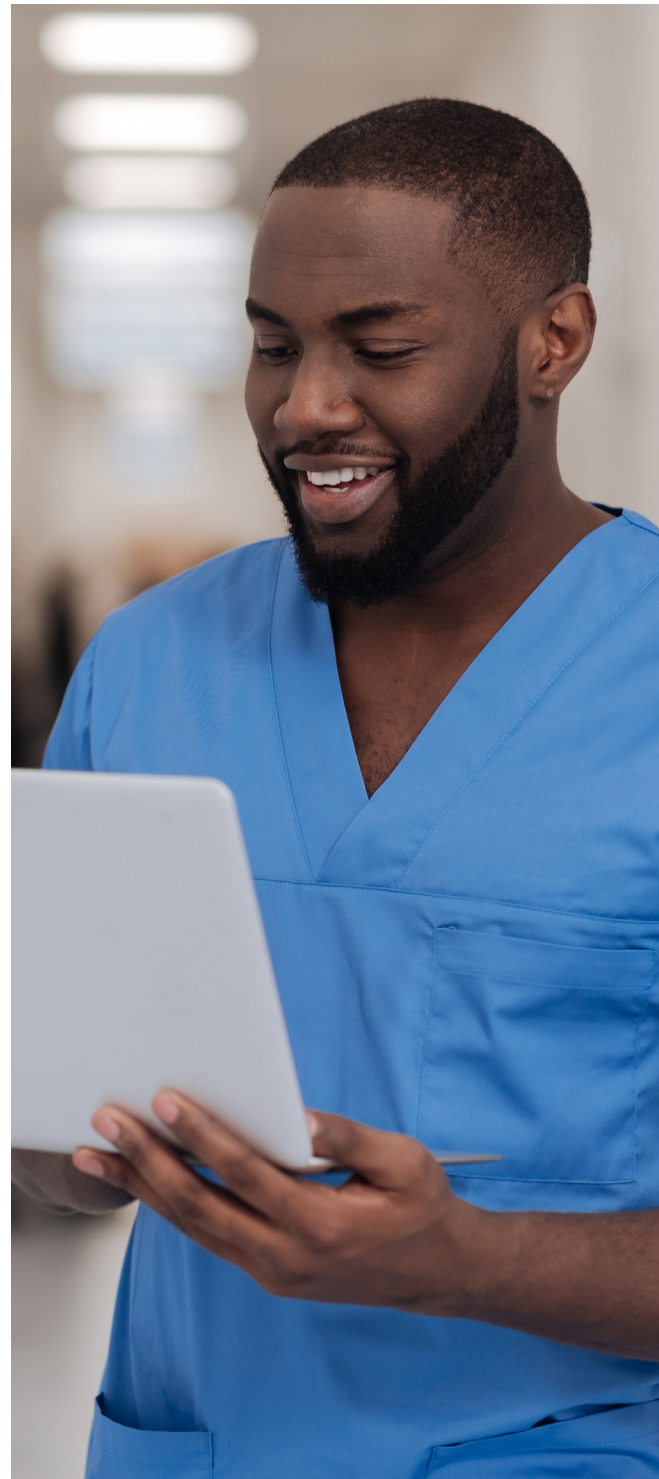


## Nationally Benchmarked Exams

Clinical Judgment Exams content is developed by teams of experts in nursing and education. Experts in assessment work with professional nurses and nursing faculty to ensure each question has a solid clinical judgment focus. Item types include multiple choice, extended multiple response, graphic, hotspot, cloze, rank order, drag and drop, matrix, and calculation. Unique electronic health record scenarios, including trending questions, are included throughout to increase realism and the clinical judgment focus.

The Strengths & Opportunities Report provides detailed information on each individual student and a Summary Report is provided for aggregated cohort performance. Performance data also demonstrates learners' percentile rank compared to a national sample of students taking the same exam. These rankings give the program reliable data that can be used for:

- **Individualized lesson plans**
- **Continuous curricular quality improvement**
- **Curricular feedback loops**
- **National benchmarks with other programs**
- **Predictions of readiness for the NCLEX-PN**
- **Predictions of practice readiness**
- **Systematic plans of evaluation**



## Security and Exam Versions

Exam security is always a priority. ExamSoft's robust back-end analytics will help identify variances in national data to best ensure content integrity. With the use of Examplify, the industry-leading testing platform by ExamSoft, exams are constantly monitored and securely administered using the latest advances in education technology.

There are four versions for each focus area. Each version is developed with a similar test blueprint, allowing faculty to administer different exams and still receive comparable data. After completing all focus areas, there is an additional Readiness Exam.

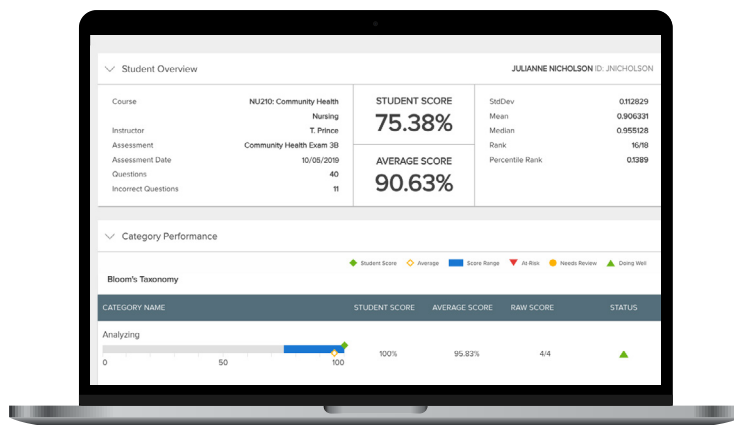
- **Benchmark 1**  
Secure and Proctored – compares individual and cohort data nationally
- **Benchmark 2**  
Secure and Proctored – used as an alternative or follow-up exam for Benchmark 1
- **Open Check**  
Non-Secure, Non-Proctored – used for students to practice with before taking the proctored Benchmark version
- **Build-Your-Own**  
Question bank for faculty – high-level questions faculty can use on their faculty-made secure exams

## Exam Descriptions

With Clinical Judgment Exams, students have access to the ExamSoft Strengths & Opportunities Report, which allows them to address their own personal needs just in time to make a difference. Each student and cohort report is mapped to key professional areas, so remediation is meaningful, efficient, and completed in an effective way. Every exam item is developed using the clinical judgment model proposed by the National Council of State Boards of Nursing (NCSBN) at the application, analysis, and evaluation levels.

These key professional areas include:

- **Systems**
- **Concepts**
- **Exemplar/Diseases**
- **Specialty**
- **Nursing Process**
- **NCLEX-PN Client Needs**
- **Quality and Safety for Nurses (QSEN)**
- **Clinical Judgment Measurement Model**



# CJE-PN Exam Description

## Fundamentals

**(3 exams, 50 items each + 100-item Build-Your-Own)**

According to research done by the NCSBN, the concepts learned in fundamentals are the most important to the practice of a new nurse. It is for this reason that the Fundamentals-Focused Exams assess students' ability to recognize cues and take action regardless of the context of the client scenario.

## Medical-Surgical

**(3 exams, 75 items each + 100-item Build-Your-Own)**

The Medical-Surgical Exams provide information on learner readiness for all areas of adult health. These exams are built with a context and safety emphasis to align with the focus of the new NCLEX-PN® and help to identify one's readiness for the complex needs of today's client.

## Pharmacology

**(3 exams, 50 items each + 100-item Build-Your-Own)**

The Pharmacology-Focused Exams will provide a valid and reliable assessment of the student's clinical judgment skills in providing safe and effective care when helping clients who are in need of pharmacotherapeutics. Safety is the central theme with emphasis on all aspects of the plan of care to include dosage calculation, lifespan, polypharmacy, and more. This exam is well suited for any level of the curriculum.

## Mental Health

**(3 exams, 50 items each + 100-item Build-Your-Own)**

Psychiatric needs of clients can arise at any point when nurses are providing care. Across the lifespan and across the healthcare industry, mental health concerns are a focus of nursing. This exam emphasizes the current state of mental health care in that the learner must be ready regardless of client background or setting.

## Maternal-Child

**(3 exams, 50 items each + 100-item Build-Your-Own)**

These exams focus on the needs of women across the lifespan and the fetus through late adolescence. Emphasis is placed on the needs of the childbearing and childrearing family. Students will receive questions covering multiple competencies in order to effectively assess their readiness to provide care in women's health and pediatrics.

## Leadership/Health Promotion

**(3 exams, 50 items each + 100-item Build-Your-Own)**

Being a leader and manager of care is an essential function of a practical/vocational nurse. The Leadership/Health Promotion Exam focuses on the generalist nurse using clinical judgment while engaging in everything from conflict resolution to delegation to interprofessional collaboration. Students will focus on clients' optimal health by identifying priorities when there is a change or threat that is most concerning.

## Readiness Exam

**(3 exams, 100 items each)**

Because of the need for valid and reliable evaluation of practice readiness, assessment of clinical judgment ability in context is the whole focus of the NCLEX-PN. Readiness Exams are designed to not only predict readiness for NCLEX-PN but the readiness for practice as well. This clinical-based assessment series provides the student and faculty with high-quality data on how best to develop a culminating lesson plan for both the NCLEX-PN and preparation for that first job.

## About Turnitin

Turnitin is a global company dedicated to ensuring the integrity of education and meaningfully improving learning outcomes. For more than 20 years, Turnitin has partnered with educational institutions to promote honesty, consistency, and fairness across all subject areas and assessment types. Our products are used by educational institutions and certification and licensing programs to uphold integrity and increase learning performance, and by students and professionals to do their best, original work.

## About ExamSoft

ExamSoft builds digital assessment solutions that provide the highest level of exam security to education institutions. ExamSoft's comprehensive reporting and instant insights help faculty and administrators improve student and program performance with flexible category tagging of key learning objectives. Exams are taken without an internet connection, ensuring a reliable, secure test experience, whether in-class or remote. The ExamSoft mission is to deliver superior digital assessment solutions to increase learning for every student, instructor, and institution. ExamSoft currently serves more than 2,300 prominent academic, certification, and licensing programs and has successfully administered over 90 million exams.

